

QUICK GUIDE TO FUSES, FUSE HOLDERS AND FUSE BLOCKS

FUSES

DC Amperage Range



Page 43

AGC® and MDL® Fuse—Appropriate for small electronic devices
I_{ic} Interrupting Capacity: 1,000A DC *V_m* Maximum Voltage: 32V DC

25-30A

I_{tr} Available amperages
 .25, .5, 1, 1.5, 2, 2.5, 3, 4, 5, 6.25, 7, 7.5, 10, 15, 20, 25, 30



Page 43

GMA® and AGA® Fuse—Appropriate for small electronic devices
I_{ic} Interrupting Capacity: 1,000A DC *V_m* Maximum Voltage: 32V DC

1-20A

I_{tr} Available amperages
 1, 2, 3, 4, 5, 7, 10, 20



Page 43

ATO® or ATC® Fuse—Appropriate for small electronic devices
I_{ic} Interrupting Capacity: 1,000A DC *V_m* Maximum Voltage: 32V DC

1-30A

I_{tr} Available amperages
 1, 2, 3, 4, 5, 7.5, 10, 15, 20, 25, 30

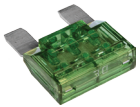


Page 43

ATM® Fuse—Appropriate for small electronic devices
I_{ic} Interrupting Capacity: 1,000A DC *V_m* Maximum Voltage: 32V DC

5-30A

I_{tr} Available amperages
 5, 10, 15, 20, 30



Page 43

MAXI™ Fuse—Economical high amp branch circuit protection
I_{ic} Interrupting Capacity: 1,000A DC *V_m* Maximum Voltage: 32V DC

30-80A

I_{tr} Available amperages
 30, 40, 50, 60, 70, 80



Page 44

MEGA® or AMG® Fuse—Appropriate for DC Main circuit protection with smaller battery banks or DC Branch circuits
I_{ic} Interrupting Capacity: 2,000A DC *V_m* Maximum Voltage: 32V DC

100-300A

I_{tr} Available amperages
 100, 125, 150, 175, 200, 225, 250, 300



Page 44

MIDI® or AMI® Fuse—Appropriate for DC Main or DC Branch circuit protection
I_{ic} Interrupting Capacity: 5,000A DC *V_m* Maximum Voltage: 32V DC

30-200A

I_{tr} Available amperages
 30, 40, 50, 60, 70, 80, 100, 125, 150, 175, 200



Page 44

Terminal Fuse—Appropriate for DC Main circuit protection at the battery post, battery switch, or terminal block
I_{ic} Interrupting Capacity: 10,000A @ 14V DC/5,000A @ 32V DC/2,000A @ 58V DC *V_m* Maximum Voltage: 58V DC

30-300A

IP Meets Ignition Protection requirements

I_{tr} Available amperages
 30, 40, 50, 60, 75, 80, 90, 100, 125, 150, 175, 200, 225, 250, 300



Page 45

Class T Fuse—Appropriate for inverters and high amp equipment
I_{ic} Interrupting Capacity: 20,000A DC *V_m* Maximum Voltage: 160V DC

225-400A

I_{tr} Available amperages
 225, 250, 300, 350, 400



Page 45

ANL® Fuse—Appropriate for DC Main circuit protection
I_{ic} Interrupting Capacity: 6,000A DC *V_m* Maximum Voltage: 32V DC

35-750A

IP 35-500 Ampere Fuses meet Ignition Protection requirements

Available amperages (*I_{tr}*)
 35, 40, 50, 60, 80, 100, 130, 150, 175, 200, 225, 250, 275, 300, 325, 350, 400, 500, 600, 675, 750

FUSE HOLDERS



Page 46

Crimpable Fuse Holder—For use with AGC® or MDL® glass fuses
I_m Maximum Amperage per circuit: 30A DC



Page 46

AGC® Waterproof Fuse Holder—For use with AGC® or MDL® glass fuses
I_m Maximum Amperage per circuit: 30A DC



Page 46

AGC® Waterproof Fuse Holder—For use with AGC® or MDL® glass fuses
I_m Maximum Amperage per circuit: 20A DC



Page 46

AGC® or MDL® In-Line Fuse Holder—Heavy duty fuse holder for AGC® or MDL® glass fuses
I_m Maximum Amperage per circuit: 30A DC



Page 46

ATO® or ATC® In-Line Fuse Holder
I_m Maximum Amperage per circuit: 30A DC



ATO® or ATC® Waterproof Fuse Holder
Imxo Maximum Amperage per circuit: 30A DC

Page 46

FUSE BLOCKS



ST Glass Fuse Block (6 Circuit Models Available)—Uses AGC® or MDL® Fuses
Vmxo Maximum Voltage: 32V DC **Imxo** Maximum Amperage per circuit: 30A DC **Imxo** Maximum Amperage per block: 100A DC

Page 46



MAXI™ Fuse Block—Uses MAXI™ Fuses
Vmxo Maximum Voltage: 32V DC **Imxo** Maximum Amperage: 80A DC

Page 46



ST Blade Fuse Block (6 and 12 Circuit Models Available)—Uses ATO® or ATC® Fuses
Vmxo Maximum Voltage: 32V DC **Imxo** Maximum Amperage per circuit: 30A DC **Imxo** Maximum Amperage per block: 100A DC

Page 47



Terminal Fuse Block—Uses Terminal Fuses
Vmxo Maximum Voltage: 58V DC **Imxo** Maximum Amperage: 300A DC

Page 48



MIDI® or AMI® Safety Fuse Block—Uses MIDI® or AMI® fuses
Vmxo Maximum Voltage: 58V DC **Imxo** Maximum Amperage: 300A DC

Page 48



MEGA® or AMG® Safety Fuse Holder—Uses MEGA® or AMG® fuses
Vmxo Maximum Voltage: 58V DC **Imxo** Maximum Amperage: 300A DC

Page 48



Class T Fuse Block—Uses Class T Fuses
Vmxo Maximum Voltage: 160V DC **Imxo** Maximum Amperage: 400A DC

Page 49



ANL® Fuse Block—Uses ANL® Fuses
Vmxo Maximum Voltage: 32V DC
Imxo Maximum Amperage: 300A DC

Page 49



ANL® Heavy Duty Fuse Block—Uses ANL® Fuses
Vmxo Maximum Voltage: 32V DC
Imxo Maximum Amperage: 750A DC



SafetyHub 100 Fuse Block—Holds 3 MIDI® or AMI® and 4 ATO® or ATC® Fuses
Vmxo Maximum Voltage: 12V DC **Imxo** Maximum Amperage per block: 300A DC
 MIDI® or AMI® Fuse Block—**Imxo** Maximum Amperage per circuit: 200A DC
 ATO® or ATC® Fuse Block—**Imxo** Maximum Amperage per circuit: 30A DC **Imxo** Maximum Amperage per block: 50A DC

Page 50



SafetyHub 150 Fuse Block—Holds 4 MIDI® or AMI® and 6 ATO® or ATC® Fuses
Vmxo Maximum Voltage: 12V DC **Imxo** Maximum Amperage per block: 350A DC
 MIDI® or AMI® Fuse Block—**Imxo** Maximum Amperage per circuit: 200A DC
 ATO® or ATC® Fuse Block—**Imxo** Maximum Amperage per circuit: 30A DC **Imxo** Maximum Amperage per block: 50A DC

Page 51



SafetyHub 250 Fuse Block with Remote Battery Switch—Holds 3 MIDI® or AMI® and 4 ATO® or ATC® Fuses
Vmxo Maximum Voltage: 12V DC **Imxo** Maximum Amperage: 240A DC
 MIDI® or AMI® Fuse Block—**Imxo** Maximum Amperage per circuit: 200A DC
 ATO® or ATC® Fuse Block—**Imxo** Maximum Amperage per circuit: 20A DC **Imxo** Maximum Amperage per block: 50A DC

Page 51