



1 **Shrinkable thermo-sleeve**
Bandes thermo-rétractable

Body with 4 long screws
Corps avec 4 vis longues

Specific to ø 15 / Particularité ø 15

Grease / Graisse

10 short screws / 10 vis courtes or / ou **ø 15 = 14 short screws / 14 vis courtes**

A - Before assembly / Préparation :

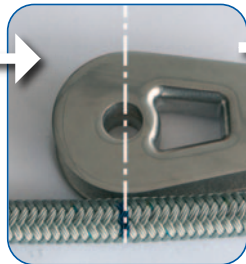


1. Thread the torque rope into the two shrinkable thermo-sleeves: the short first and then the bigger.

Enfiler les deux gaines thermorétractables dans le câble anti-torsion : d'abord le petit, puis le grand.

2. Remove the 4 long screws from the cable clamp

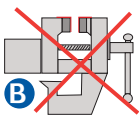
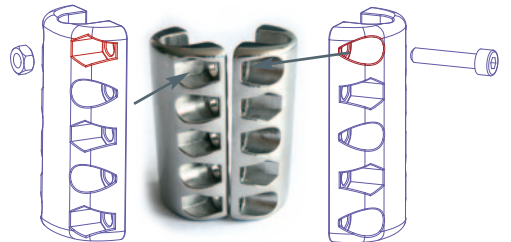
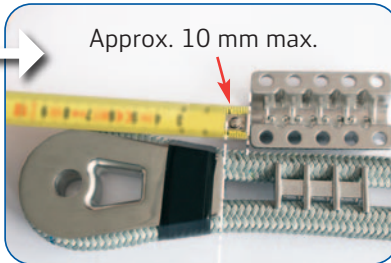
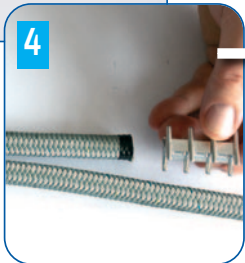
Positionner le câble anti-torsion autour de la cosse.



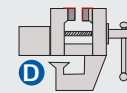
with Facnor thimbles*
avec cosse Facnor

Ø9.5: 21-23cm
Ø11: 21-23cm
Ø13: 23-25cm
Ø15: 28-31cm

* These values may change according to thimble
Ces valeurs peuvent changer suivant le type de cosse



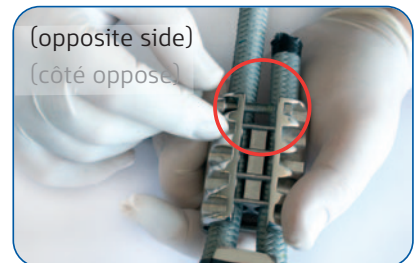
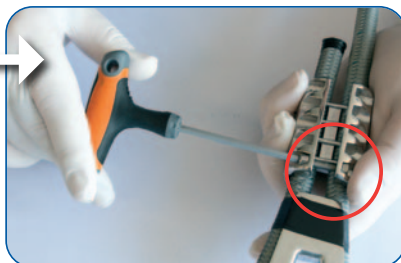
B - Clamp positioning without a vice
Approche du serre-câble sans étau



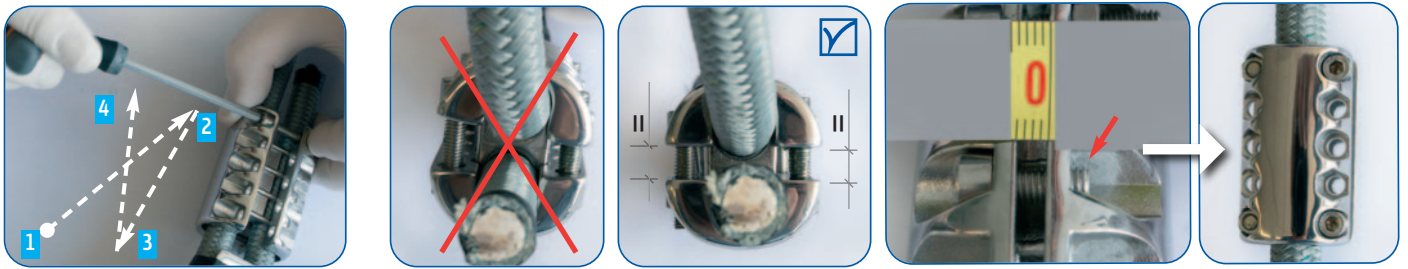
→ With a vice : see § D
Avec un étau : voir § D



(4 long screws / 4 vis longues)

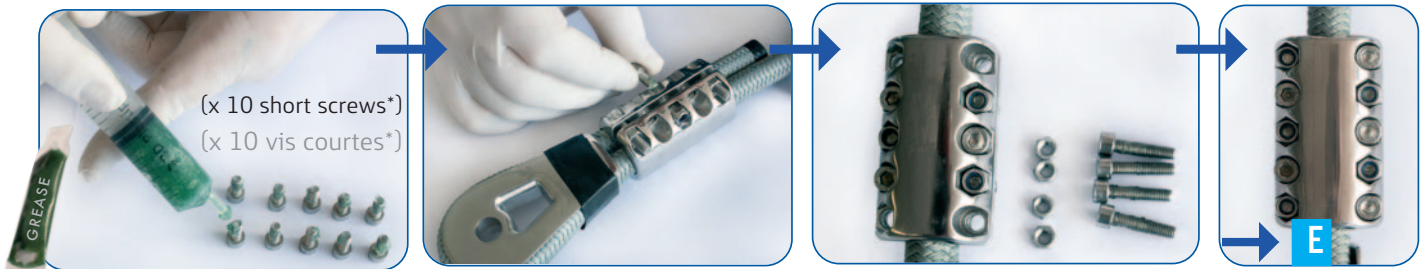


(...) Fitting of the clamp on the torque rope / Installation du serre-câble sur le câble anti-torsion :

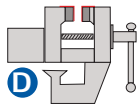


Tighten progressively the screws as indicated above / Procéder en croix pour uniformiser le serrage

C - Complete clamp installation / installation définitive du serre-câble :

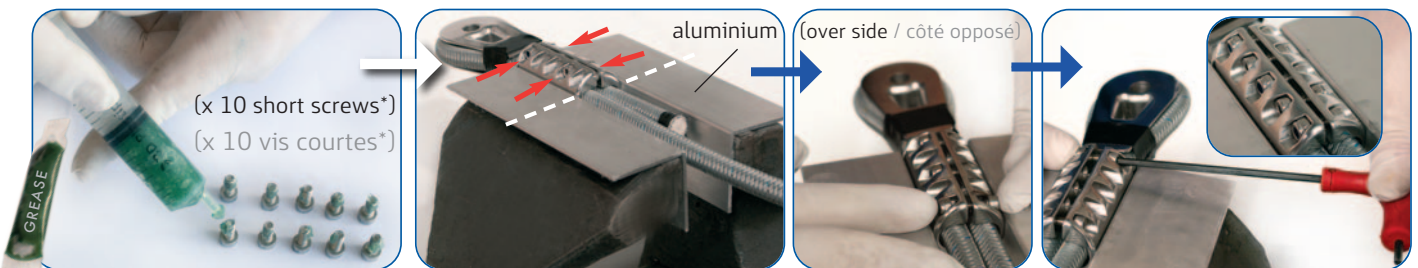


ø 15 * x14 screws for the ø15 model / x 14 pour le FRC ø 15



D - With a vice / avec un étau

In this case you don't need to use the long screws / Dans ce cas, vous n'avez pas besoin des vis longues

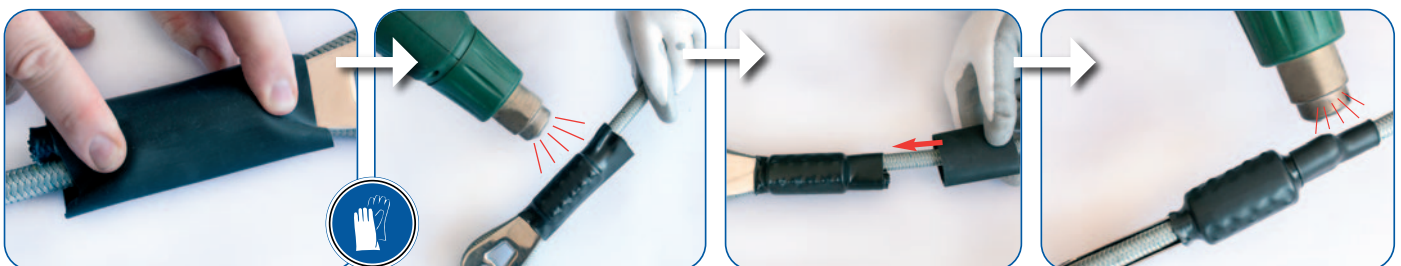


ø 15 * x14 screws for the ø15 model / x 14 pour le FRC ø 15

E - Tightening / Serrage final



F - Final fitting (Shrinkable thermo-sleeve) / Finition (gaine thermo-rétractable) :



NEWS
& JOIN US ON



See our channel

